

Introduction



WHAT IS A PARKS & RECREATION MASTER PLAN?

- A strategic document;
- Provides recommendations and direction for the entire parks and recreation system;
- Assists the District in prioritizing realistic investments that respond to community needs in parks and recreation;
- Focuses on investments and changes in the short and medium term (10 year time frame); and
- Identifies long-term projects or goals (10-25 year time frame).

BACKGROUND

- The previous plan, 'The Parks and Open Space Master Plan' was last updated in 2006.
- The 2006 Plan provided a key guide and reference for implementing projects and upgrades over the last 11 years.
- The majority of projects identified in the previous plan have been carried out. Some projects that are outstanding or in-progress.
- The 2006 Plan and our OCP provide strategic guidance for improving parks and guiding new park dedications that arise from land development and subdivision processes.
- There is a need to update and refine our plan for parks and recreation so that District parks and open spaces are developed to their full potential over the next 10+ years.

PURPOSE & OBJECTIVES

- The current process will:
 - ▶ Review the existing system and projects;
 - ▶ Consider changes in our community layout, distribution, and demographics;
 - ▶ Discuss opportunities and constraints for changes and improvements;
 - ▶ Explore the future roles of parks amenities in the District, as well as in each of the seven neighbourhood sectors;
 - ▶ Facilitate a discussion with our community to identify values, concerns, and ideas for the future of the system; and
 - ▶ Guide recommendations for the future parks system.

PARKS & RECREATION SYSTEM:



PARKS



TRAILS & GREENWAYS

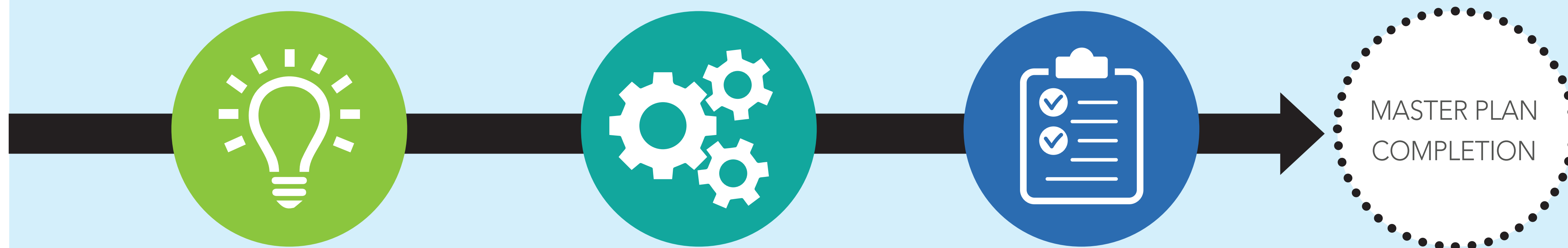


BEACH ACCESSES

Project Process



Project Process Diagram



IDEA GATHERING & UNDERSTANDING THE SYSTEM
Sept - Nov 2017

GENERATING RECOMMENDATIONS
Dec 2017 - Feb 2018

FINALIZING THE MASTER PLAN
Feb - April 2018

MASTER PLAN COMPLETION

April 2018



ENGAGEMENT

We are here!

Public OPEN HOUSE EVENT
November 16, 2017

Public Survey
January 2018

Public Review and Comment
March 2018

Stakeholder Interviews
November 2017

Council Update
January 2018

Final Presentation to Council
March / April 2018

HOW TO SHARE YOUR IDEAS

Help us to chart the directions for the Parks and Recreation Master Plan Update. Your input will be used to guide the plan ideas and recommendations.



Add Your Ideas with a Sticky Note

Review the information and add your thoughts to one of the display posters or maps.



Complete a Feedback Form

Fill in a paper copy of the form today or online via www.sechelt.ca/Live/Community-Planning/Parks-Master-Plan by Friday, December 1st.



Talk with Us!

District staff and project team members are here today to answer questions and listen to your ideas. Come and say hello!



Questions or comments?

Continue to visit www.sechelt.ca/Live/Community-Planning/Parks-Master-Plan for up-to-date information. If you have any further questions, contact the District Planning Department at: **604-885-1986** or email info@sechelt.ca

Then and Now



MAP: DISTRICT OF SECHLT NEIGHBOURHOODS



POPULATION:

THEN*
7,770

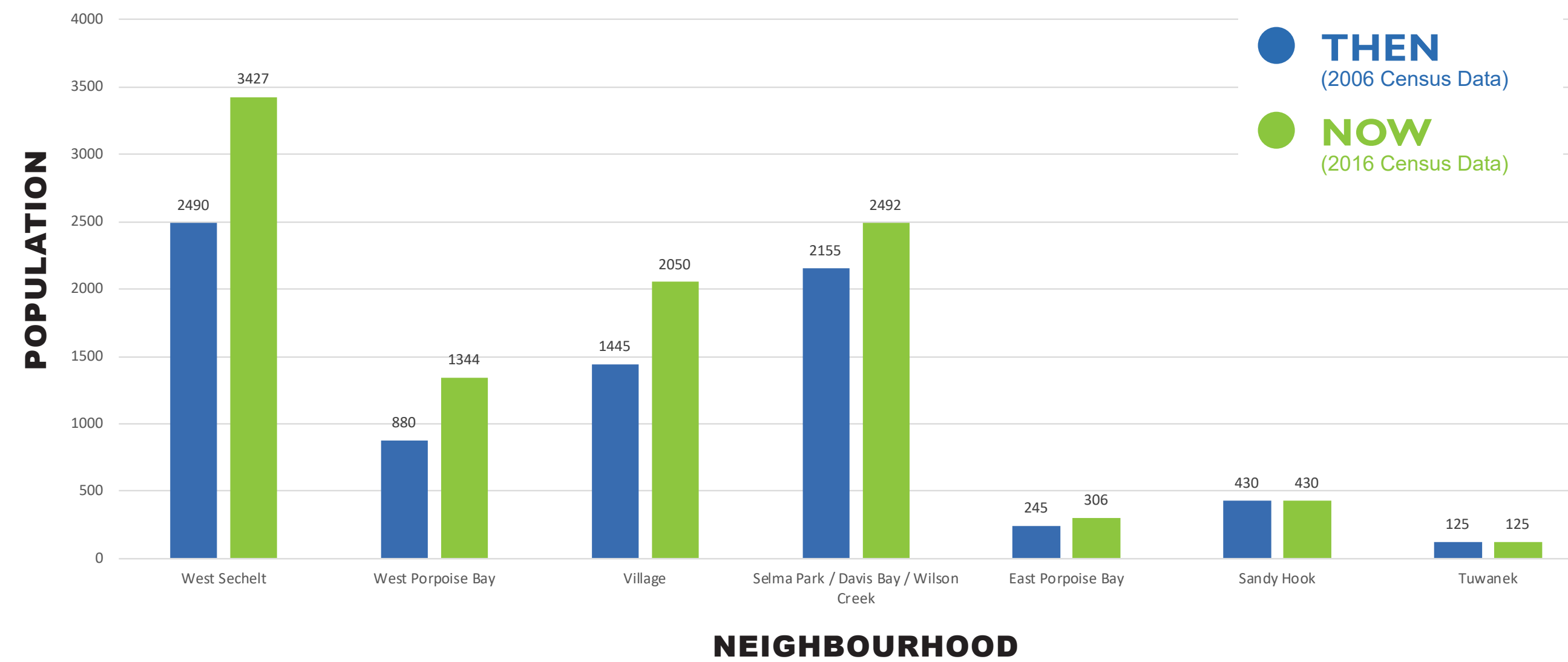
*2006 Census Data

NOW^
10,174

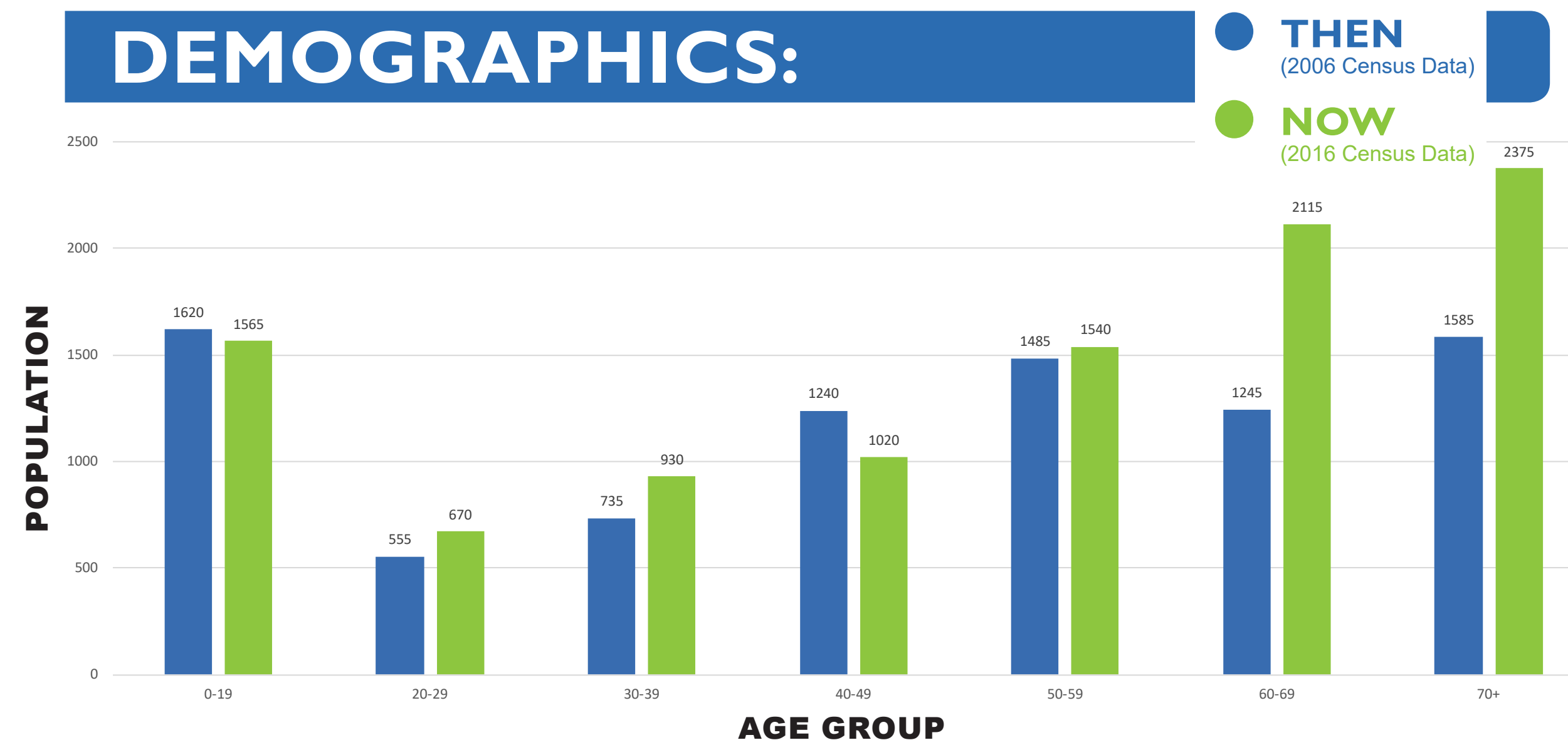
^2016 Census Data

- The District has grown by ~30%
- West Sechelt has grown most significantly
- The eastern neighbourhoods have grown the least

POPULATION

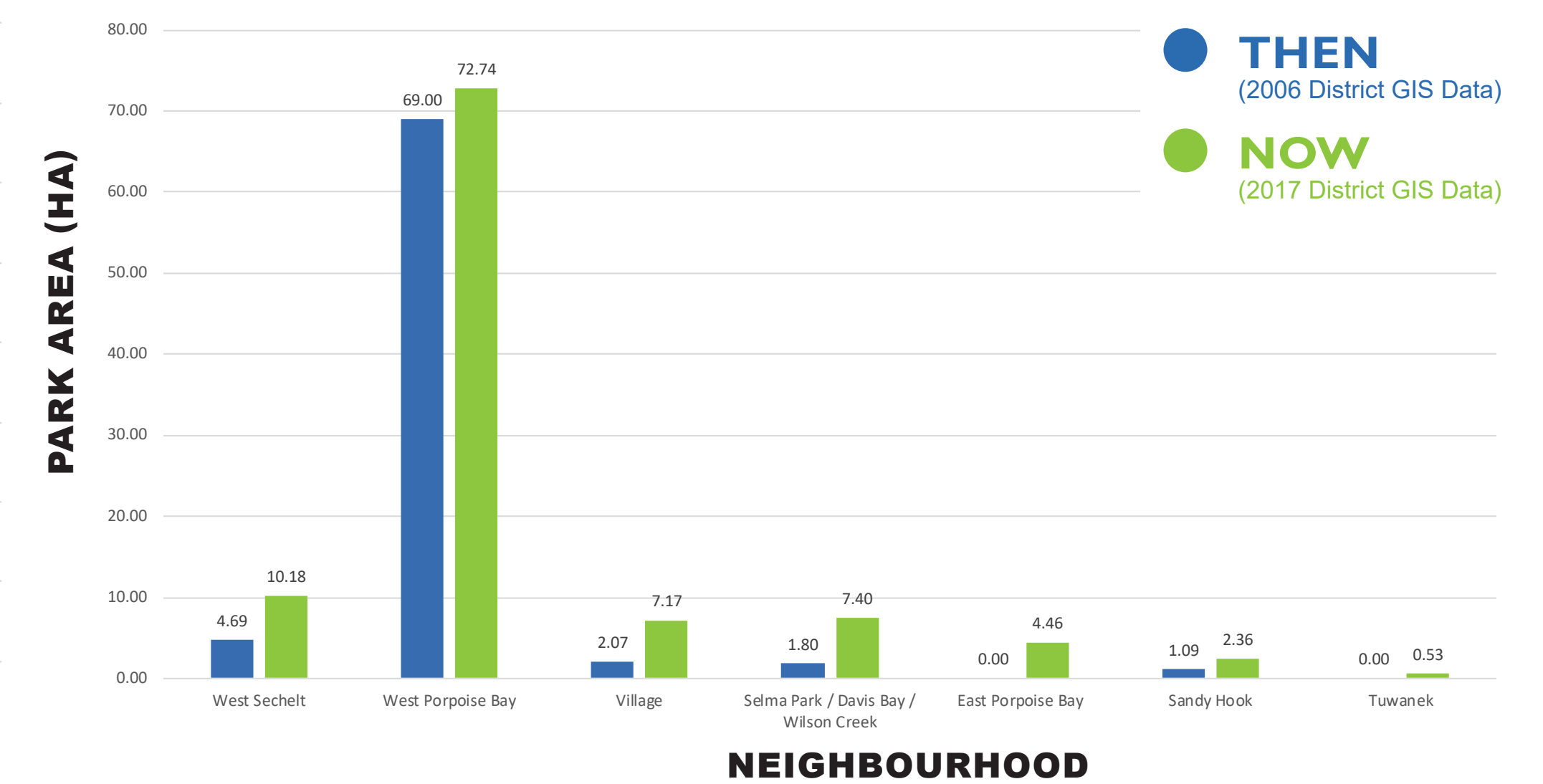


DEMOGRAPHICS:



- The **majority (59%)** of the population is **+50 years of age**
- The population **over the age of 60** has **increased by 10%** since 2006
- **Only 22%** of the current population is **under the age of 30** (decrease from ~25% in 2006)

PARK AREA



Park Area Ratio:

	THEN Park Area Ratio Hectares/1000 residents	NOW (2017) Park Area Ratio Hectares/1000 residents
West Sechelt	1.88	2.97
West Porpoise Bay	1.14	54.12
Sechelt Village	1.43	3.50
Selma Park / Davis Bay / Wilson Creek	0.84	2.97
East Porpoise Bay	0.00	14.58
Sandy Hook	2.53	5.49
Tuwanek	0.00	4.24

- The benchmark for park area ratio is **1.2 ha/1000 residents** (this is part of Sechelt's OCP, and comes from the National Recreation and Parks Association (NRPA) guidelines)
- In 2006, four neighbourhoods did not meet the benchmark ratio of 1.2.
- **Currently, all neighbourhoods exceed the benchmark ratio of 1.2.**
- All neighbourhood ratios improved from 2006 to present.

Parks Projects Completed 2006-2017



PARKS

1. Wakefield Park
2. Les Way Park
3. Dr. Walter Burtnick Park
4. Upper Kinnikinnick Park Sports Field
5. Silverstone Beach Park
6. The Ridge
7. Spirit Square
8. Skateboard Park Upgrades
9. Clayton's Park
10. Mission Point Park
11. Friendship Park
12. Poise Island Park
13. Tyler Heights Park
14. Snickett Park Pathway Improvements
15. Proctor Bike Park
16. Burnett Falls Park
17. Yew Park
18. Water Resource Center Grounds

BEACH ACCESSES

1. Tillicum Bay Beach Access
2. Silverstone Beach Access
3. Wakefield Park Beach Access
4. Yew Beach Access
5. Shoreline Beach Access
6. Trail Island Drive
7. Beach Access signs (Red Cedar design)
8. Kontiki
9. Mission Point Park
10. Snake Bay Restoration
11. Friendship Park
12. Timbercreek Beach Access
13. Poise Island Beach Access
14. Mills Lookout
15. Snake Bay Beach Access
16. Seawatch Restoration
17. Beach Access Info Signage (MIA Grant)
18. Nestman Beach Access
19. Benner Beach Access
20. Wakefield Rd.
21. Coracle Beach Access
22. McCourt Beach Access Restoration
23. Tillicum Beach Access Restoration

TRAILS & PATHWAYS

1. Highmore – Gale Connector Trail
2. Highmore - Gale Ave N. Connector Trail
3. Kinnikinnick Forest Trail Improvements
4. Crowsten Trail
5. Chapman Creek Reroute #1
6. Brown Sugar Mountain Bike Trails
7. Trail Bay Walkway Seawall Project
8. Shoal Way – Ripple Way Connector Trail
9. Chapman Trail – Airport Trail & Bridge
10. Snickett Park – Trail Paving
11. Harbour to Gale Ave N. Connector Trail
12. Kinnikinnick Park Dog Walker Trail
13. Hackett Park Accessibility Improvement
14. Heritage – Fairway Connector Trail
15. Selma Park Rd – Chapman Bridge Trail
16. Kinnikinnick Park Trail Head Kiosks
17. Rimrock – Gale Ave N Connector Trail
18. Chapman Creek Reroute #2
19. Fairway – Gale Connector Trail
20. Burtnick Park Permeable Pathways

AMENITIES

1. Hackett Park Washrooms
2. Kinnikinnick Park Washrooms
3. Sechelt Marsh Bridge replacement
4. Hackett Park Tennis Court resurfacing
5. Bear Cans (Outskirt Parks)
6. Upper Kinnikinnick Sports Field Lighting
7. Portable Bleachers for Sports fields
8. Additional Banners and Baskets
9. Rockwood Accessibility Improvement
10. Mission House Renovations
11. Drinking Fountains - 8 locations
12. Davis Bay Seawall Planters
13. Lower Kinnikinnick Sports Field Lighting
14. Bulletin Board Installs (5 locations)
15. EV Recharging Stations
16. Mission Point Park Viewing Deck (Lions)
17. Lower Kinnikinnick Drainage Project
18. Kinnikinnick Baseball Diamond Expansion
19. Lower Kinnikinnick Park Baseball Lighting
20. Kinnikinnick Park Bear Can Project
21. Washroom Hand Dryer Project
22. Irrigation Controller Upgrades

PLAYGROUNDS

1. Picadilly Accessible Playground Upgrade
2. Friendship Accessible Playground Upgrade
3. Tyler Heights Playground
4. Friendship accessibility (Phase II)
5. Brookman Park Playground Improvements
6. Creekside Park Playground Improvements

STREETSCAPES & GARDENS

1. Aquatic Center Grounds
2. Palmaro's Streetscape
3. Cowrie St Planters, Gardens and Tree Wells
4. Civic Square Landscaping
5. Mission Point Park - Trees for Tomorrow
6. Shorncliffe Boulevard upgrade
7. Boulevard Landscaping – Village
8. Trees for Tomorrow – Mission Point Pk
9. Porpoise Bay Parking Lot upgrades
10. Shorncliffe Blvd Landscaping

11. Farmers Market Area Improvements
12. Sechelt Marsh Landscaping Improvements
13. Inlet Rotunda Restoration Project
14. Christmas Décor - Pole Wraps/Wreathes
15. Ocean Gardens
16. Davis Bay W/R Mural & Landscaping
17. Teredo Hedge
18. Nickerson/NWBR Streetscape
19. Trail Ave/ Boulevard Landscaping
20. Inlet/Dolphin Landscaping

21. Davis Bay Parkway Signs
22. Concordia Streetscape Restoration
23. Sechelt Innovations Garden Beds
24. Ocean Ave/Boulevard Landscaping
25. Dolphin Street Landscaping
26. Ambulance Station Bed Restoration
27. Trail Bay Landscaping & Irrigation
28. Mission Point Shoreline Restoration
29. Ancient Log Display