



Infrastructure Purpose

The District operates and maintains transportation pathways enabling safe and effective travel for goods as well as our citizens.



Historic Cost
21.4 Million

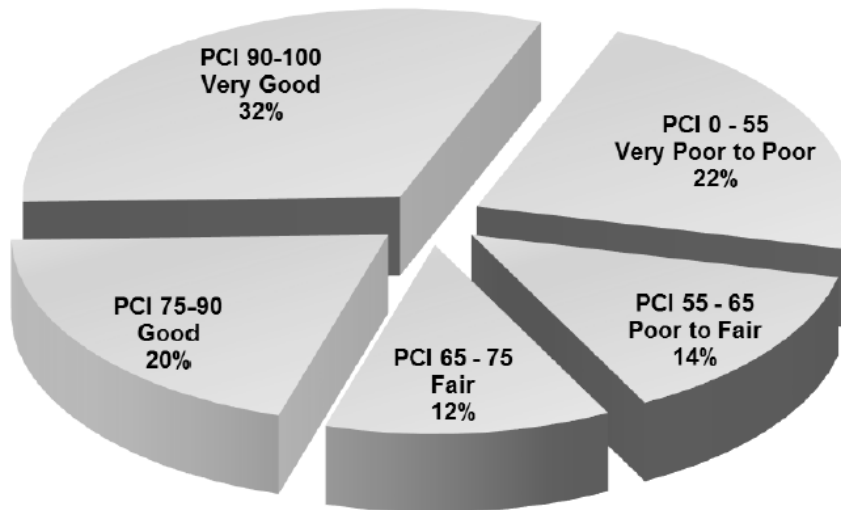


Average Condition
GOOD



Inventory
Local Roads- 86km centerline,
Arterial/Collector Roads- 19km centerline
Multiuse Pathways- 20km,

Road condition is collected by contracted services, last collected in 2015. Staff are working to convert condition observation into life expectancy forecast.



Pavement Condition Index (PCI)

Data Confidence Rating

- A- Verified Condition and Analytical Techniques
- B- Observed Condition**
- C- Age Only
- D- Historical Knowledge
- F- Assumptions




Infrastructure Purpose

The District's Wastewater Collection System is a combination of linear sewers, drainage features and facilities. Stormwater is treated for both quality and quantity to ensure adequate drainage and proper environmental stewardship.



Replacement Cost
117 Million

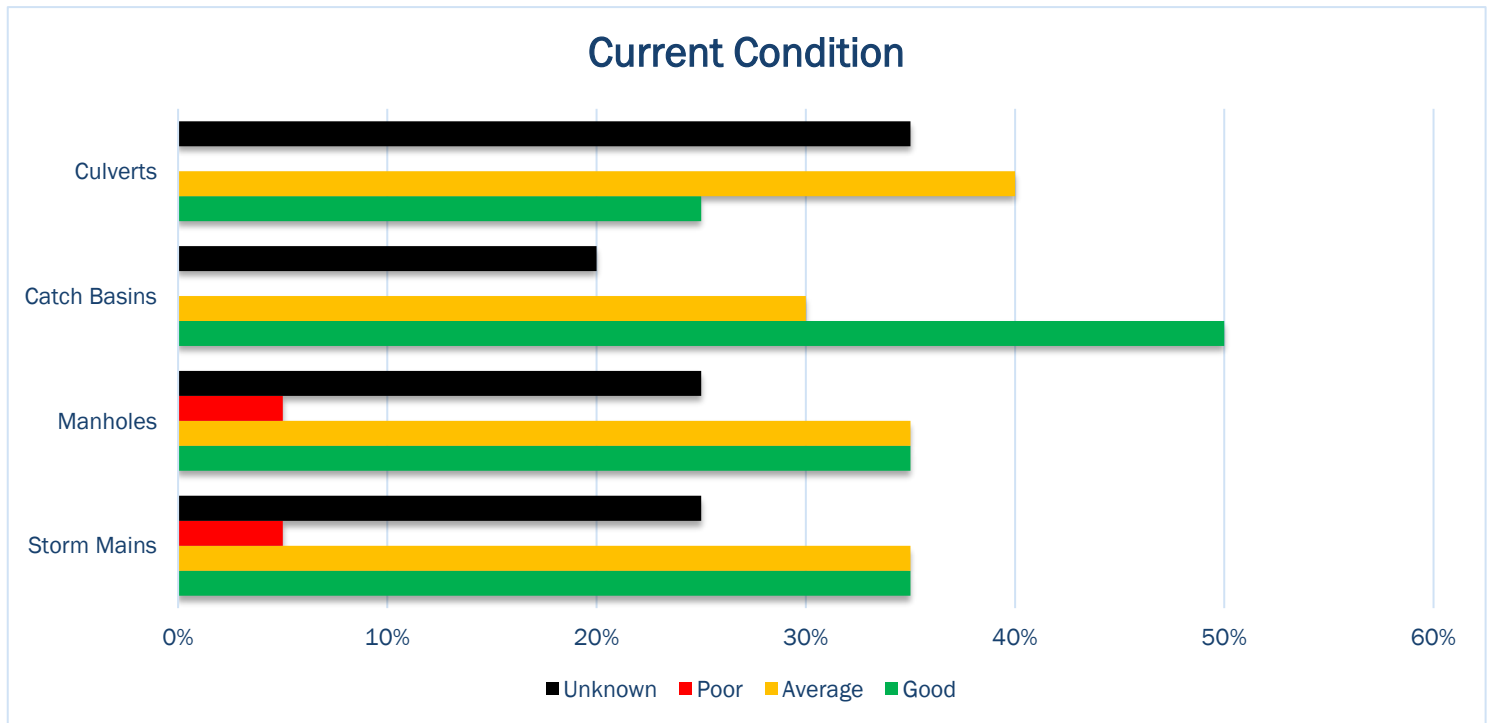


Average Condition
AVERAGE



Inventory
Storm Mains- 50km
Access holes-900
Catch basins-770
Culverts-5km

Stormwater system condition was based off mostly historical knowledge and some age information. Staff have identified this category as needing significant data collection.



Data Confidence Rating

- A- Verified Condition and Analytical Techniques
- B- Observed Condition
- C- Age Only
- D- Historical Knowledge**
- F- Assumptions



Infrastructure Purpose

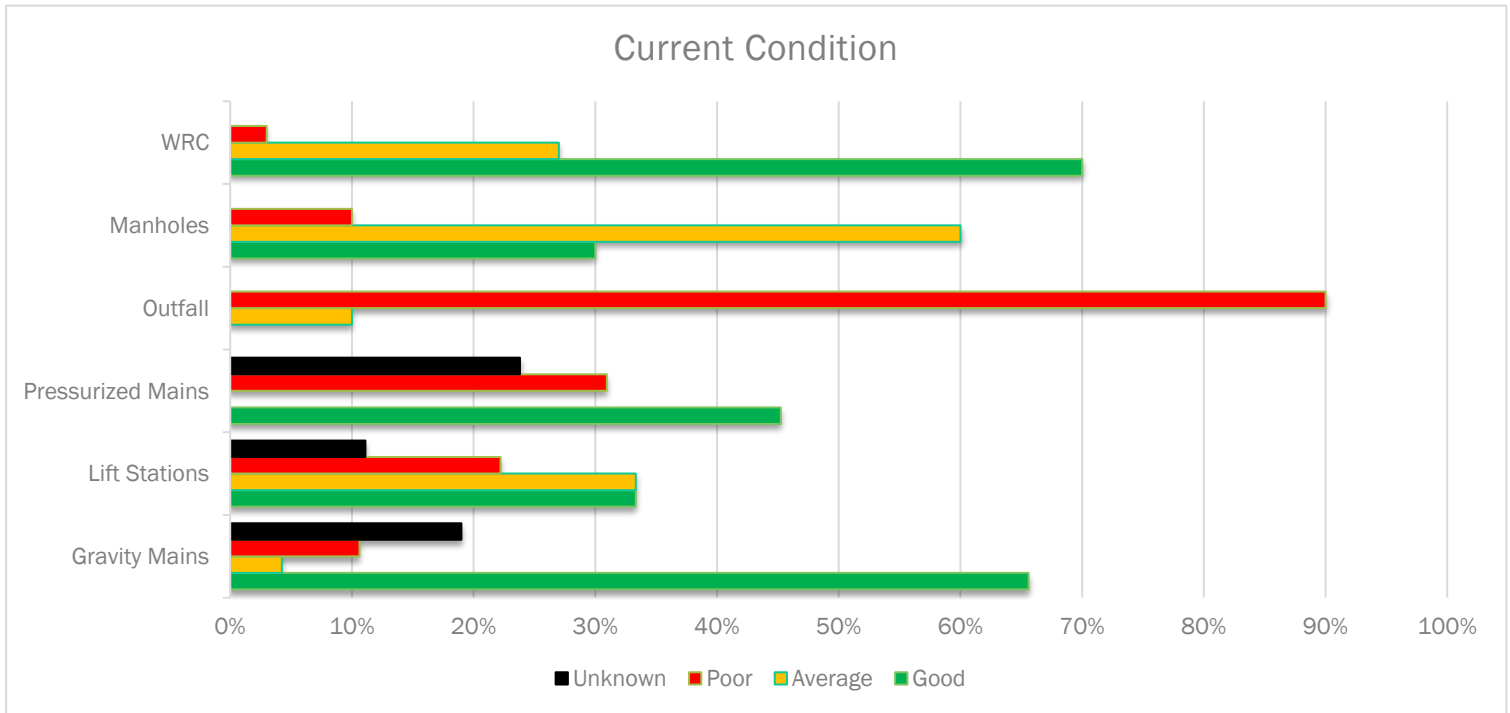
The District's Wastewater Collection System is a combination of linear sewars and lift stations that carry flows from homes and businesses to the Water Resource Centre where it is treated and discharged through the outfall into the ocean.

Replacement Cost
196 Million

Average Condition
GOOD

Inventory
Gravity Mains- 52km
Pressurized Mains 14.5km
Outfall- 450m
Sewer Access Holes- 1,150
Lift Stations- 9
Water Resource Centre-1

Wastewater Collection system condition was based off age, historical knowledge, and service request history.



Data Confidence Rating

- A- Verified Condition and Analytical Techniques
- B- Observed Condition
- C- Age Only**
- D- Historical Knowledge
- F- Assumptions